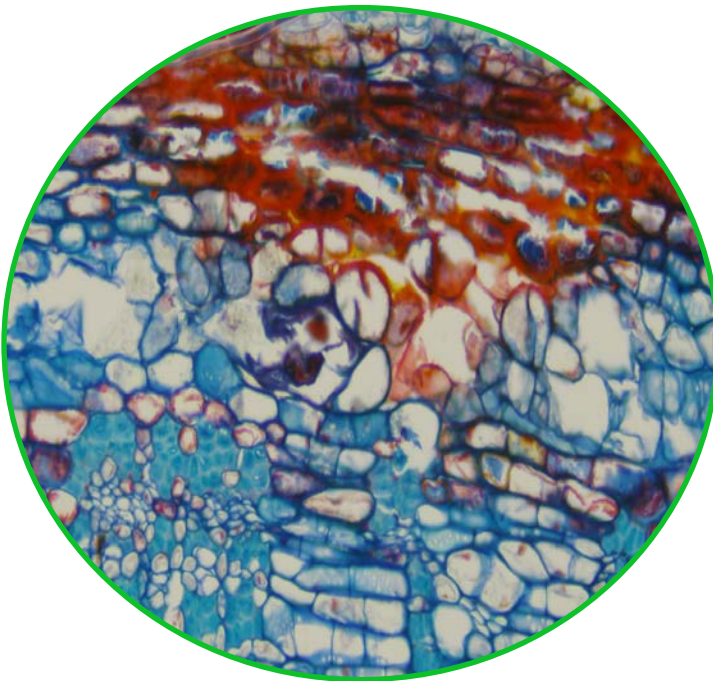


HDCAM3B

High Definition Microscope Camera

Manual





Getting Started

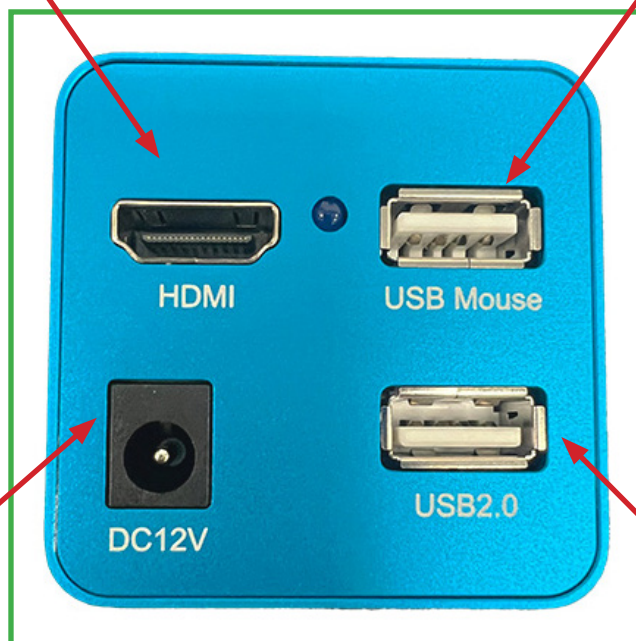
Attach the HDCAM3B to the C-Mount on the Microscope.



Plug one end of the HDMI cable into the HDMI slot on the camera and the other end into the HDMI slot on the HD Monitor. (If your HDCAM3B includes the 13" HD Monitor, please refer to pages 2,3,4, and 5.)



Plug in the USB Mouse to the USB slot on the camera.



Plug the power adapter into the DC12V power adapter input on the camera. This will power on the camera which is indicated by a blue light illuminating on the camera. The blue light will blink as the camera powers up. When the blue light stops blinking, the camera is ready for use.

Insert a USB flash drive into the USB 2.0 slot to save images.

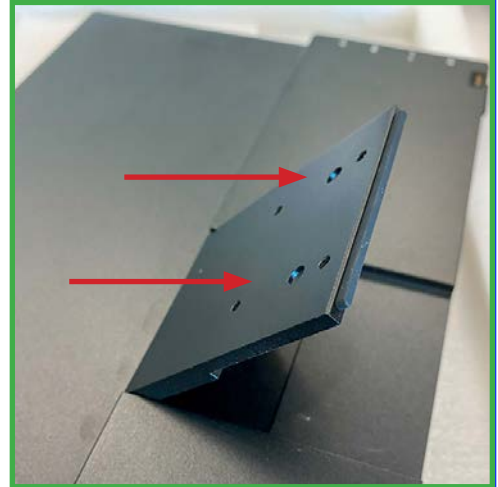
13" HD Monitor Set up



Attach the HDCAM3B to the C-Mount on the Microscope.



Locate the 2 holes on the camera and the 2 holes on the monitor mount



- Line up the camera as shown below.
- Fasten the screws to the mount so the camera is secure as shown below.



The allen key and screws required to secure the camera are located beneath the monitor and the foam in the camera box.

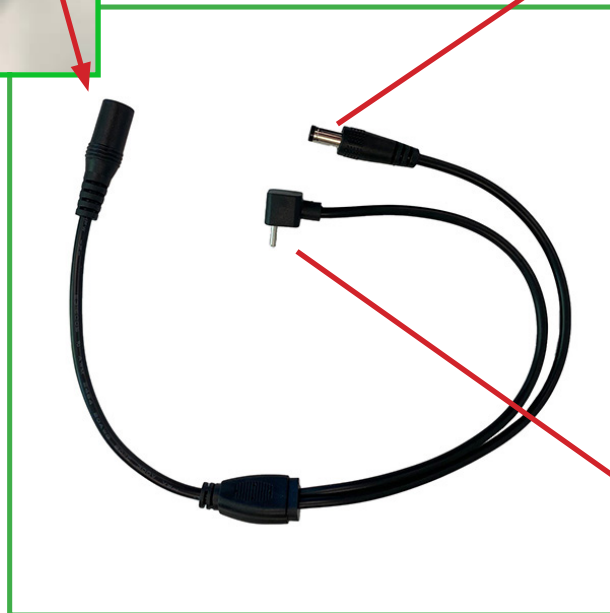


13" HD Monitor Set up

Insert the main power adapter into the remaining connection of the power adapter splitter.



Attach one end of the power adapter splitter to the DC12V power adapter input on the camera



Attach the other end to the DC12V power adapter input on the HD monitor.



13" HD Monitor Set up



Insert one end of the HDMI cable into the HDMI slot on the camera, and the other end into the monitor as shown below.



Camera and 13" HD Monitor assembled.





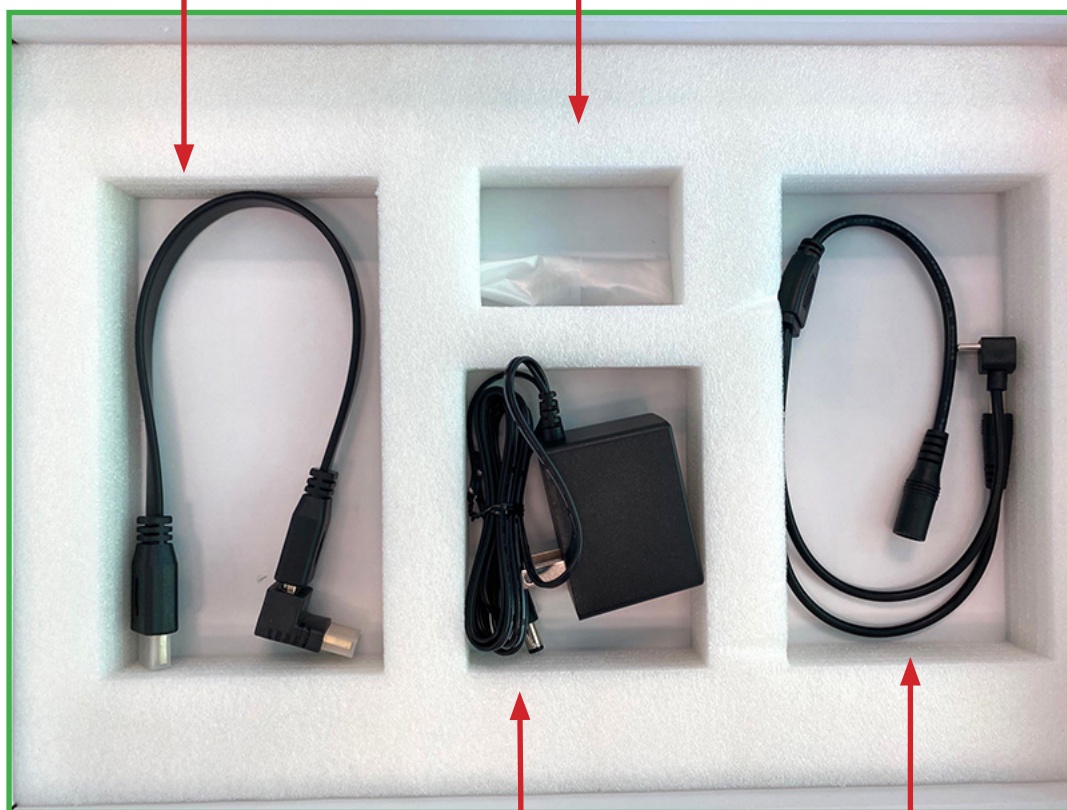
13" HD Monitor Setup

The following items are found beneath the 13" monitor in the box.

HDMI cable to connect
monitor to camera.



Allen key and screws to
mount camera to monitor.



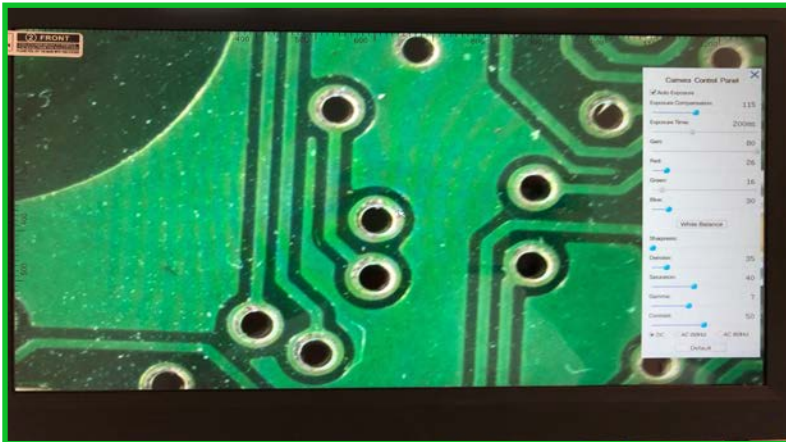
Power Adapter Splitter

Power Adapter

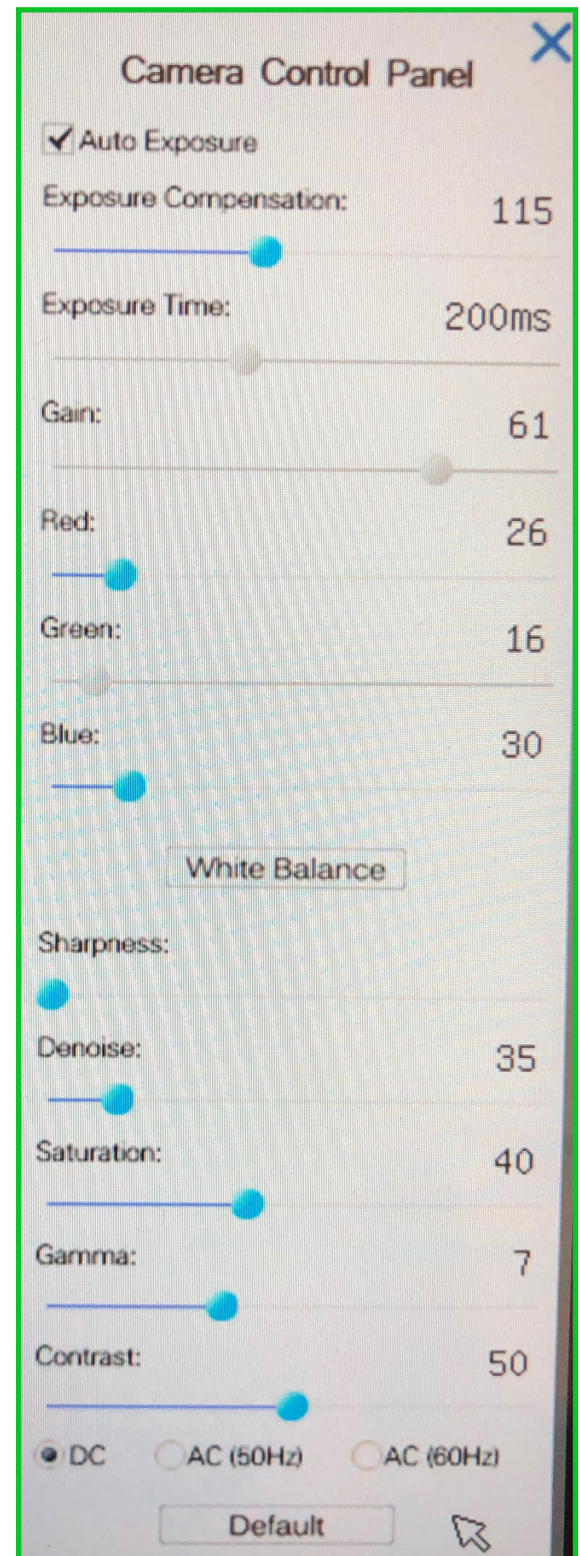
Camera Control Panel



Once the camera is properly set up to the monitor and microscope, a live image of your specimen will appear on the monitor.



- The camera control panel will appear on the right hand side of the monitor.
- Here you can enhance the appearance of your image by adjusting the settings.





Working with the Tool Bar

- Hover the mouse cursor in the lower center portion of the monitor.
- A tool bar will appear with additional options.



Capture Image- Select this button to capture an image that will save directly to the SD card.



Zoom In- Select this button to zoom in on the image.



Zoom Out- Select this button to zoom out on the image.



Vertical Flip- Select this button to vertically flip the image.



Horizontal Flip- Select this button to horizontally flip the image.

Working with the Tool Bar

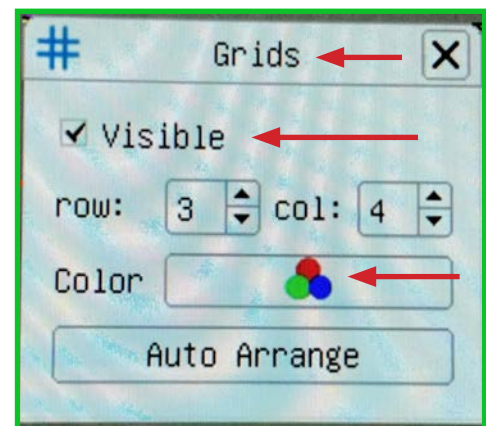


Freeze / Resume- Select this button to freeze or resume.



Grids- Select this button to create a grid overlay on your live image.

- A grid box will appear with options to select the number of rows and columns.
- There is also an option to change the color of the grid lines. By selecting the “Color” button the grid lines will change from red to blue, then green.
- To remove the grid overlay, uncheck the “Visible” box.



Control Panel- Select this to pull up the control panel or hide the control panel. You can also hide the control panel by clicking the “X” in the top right hand corner of the control panel.



Info- Provides you with the software version.



Quick Trouble Shooting Guide

Problem	Solution
No live image displayed	Beam splitter is not in the proper setting. Check the beam splitter setting.
Live image is dark	Adjust the illumination on the microscope Use the white balance option on the control panel.
Live image is upside down or backwards	Use the Rotate and Flip features on the tool bar.
Dust or dirt is visible in the live image.	Clean the sample Clean the objective Clean the eyepieces Clean the C-mount Clean the lens on the camera

info@richter-optica.com
www.richter-optica.com